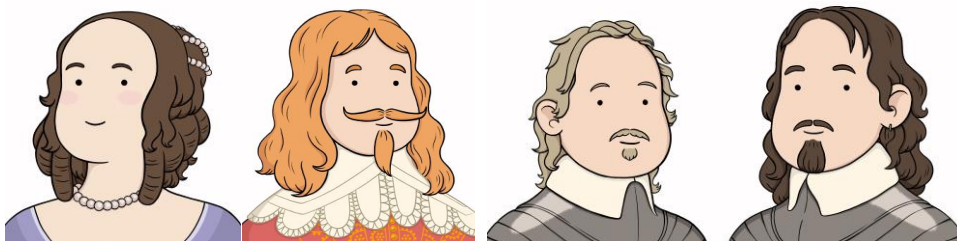


The British Civil Wars

Who am I?

How to Play:

1. Cut out each of the eight cards.
2. Work in pairs.
3. Decide who will be guessing and who will be answering the questions.
4. The person answering the questions needs to pick a card (without looking) and hold it in front of them.
5. The person guessing MUST only ask questions that can be answered 'yes' or 'no'. For example:
 - a) Am I a Cavalier?
 - b) Am I a member of the Royal Family?
 - c) Was I injured in battle?
 - d) Am I famous for writing a book?
5. When the person who is guessing gets the correct answer, they can look at the front of the card they are holding to see if they are correct.
6. Swap over to let the other person have a go guessing.



Explore britishcivilwars.ncl.ac.uk

This work is licensed under a [Creative Commons Attribution-NonCommercial 4.0 International License](https://creativecommons.org/licenses/by-nc/4.0/).



Discover more resources online at:

www.ncl.ac.uk/library/in-the-community/education-outreach
and www.nationalcivilwarcentre.com/schools



The British Civil Wars

Who am I?

Archbishop William
Laud



Responsible for religious reforms that were viewed as too Catholic.

King Charles I



Believed in the Divine Right of Kings and was executed in 1649.

Lucy Hutchinson



Married to Colonel John Hutchinson and is famous for writing her husband's memoirs.

Sir Alexander Leslie



A Scottish General who led a Scottish invasion into England in 1644.

Explore britishcivilwars.ncl.ac.uk

This work is licensed under a [Creative Commons Attribution-NonCommercial 4.0 International License](https://creativecommons.org/licenses/by-nc/4.0/).



 Newcastle University | Education Outreach

**NATIONAL
CIVIL WAR
CENTRE**
NEWARK MUSEUM

Discover more resources online at:
www.ncl.ac.uk/library/in-the-community/education-outreach
and www.nationalcivilwarcentre.com/schools

The British Civil Wars

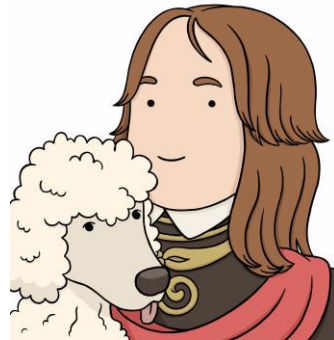
Who am I?

Queen Henrietta
Maria



Married to King Charles I and disliked by many because she was Catholic.

Prince Rupert



The King's nephew, who famously went into battle with his dog, who was called Boye.

Oliver Cromwell



A leading statesman and general during the British Civil Wars, who later became Lord Protector.

Sir Thomas Fairfax



A Parliamentary Commander who was seriously injured when a musket ball hit his shoulder.

Explore britishcivilwars.ncl.ac.uk

This work is licensed under a [Creative Commons Attribution-NonCommercial 4.0 International License](https://creativecommons.org/licenses/by-nc/4.0/).



 Newcastle University | Education Outreach

**NATIONAL
CIVIL WAR
CENTRE**
NEWARK MUSEUM

Discover more resources online at:
www.ncl.ac.uk/library/in-the-community/education-outreach
and www.nationalcivilwarcentre.com/schools